

# Introducing Fanvil V Series

---

## IP Phones



# CONTENTS

**1**

**Product Overview**

**2**

**Highlights**

**3**

**Comparison**

**01**

# Product Overview

---



# Fanvil V Series IP Phones



V67



V65



V64



V62



V Series has 4 major product models which have integrated with elegant business appearance, leading technology and powerful functions, offering an efficient installation and all-in-one communication solution.



# Fanvil V Series IP Phones

V Series is more than an efficient telephone but a delicate work of art, providing a smart and smooth business communication experience for executives and managers. As the flagship video phone featuring an adjustable touch screen and a cool lighting keypad, V67 is a perfect combination of elegant outside and powerful inside.



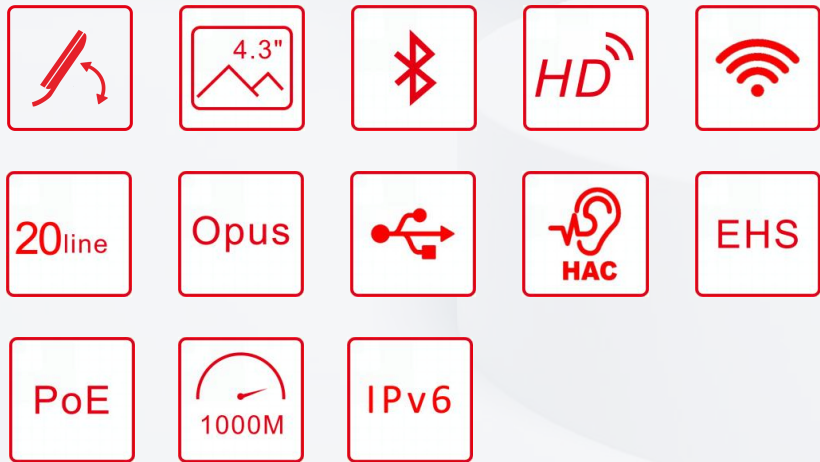
# V67: Flagship Smart Video Phone



|                                 |   |   |
|---------------------------------|---|---|
| <b>Antibacterial Material</b>   | √   | ★ |
| <b>Screen</b>                   | 7" 1024x600 Color LCD (IPS/Multi-point touch)<br>Adjustable angle of 0° to 40°                        | ★ |
| <b>Colorful Lighting Keypad</b> | √   | ★ |
| <b>OS</b>                       | Android 9.0   | ★ |
| <b>Local Audio Conference</b>   | 10-party audio conferencing<br>(including up to 2-party video calls)                                  | ★ |
| <b>Local Video Conference</b>   | 3-party video conferencing  | ★ |
| <b>WiFi/Bluetooth</b>           | WiFi 2.4GHz&5GHz/BT4.2  | ★ |
| <b>Video</b>                    | Built-in 5 Mega-pixel camera, 1080P@30fps   | ★ |
| <b>Audio</b>                    | HD Audio with G.722,Opus<br>Full-duplex Acoustic Echo Canceller (AEC)<br>Noise Reduction technologies |   |
| <b>SIP Lines</b>                | 20  |   |
| <b>DSS Keys</b>                 | 116(29×4) Virtual DSS Keys  |   |
| <b>Network</b>                  | 10/100/1000 Mbps  |   |
| <b>USB</b>                      | USB Type A ×1, connect with USB headset&USB disk  |   |
| <b>Power</b>                    | PoE/PSU   |   |
| <b>Installation</b>             | Desktop Stand/Wall Mountable (optional)   |   |



# V65: Prime Business Phone

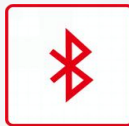


|                               |   |   |
|-------------------------------|---|---|
| <b>Antibacterial Surface</b>  | √   | ★ |
| <b>Screen</b>                 | 4.3" 480x272 Color LCD (IPS)<br>Adjustable angle of 0° to 40°   | ★ |
| <b>OS</b>                     | Linux   |   |
| <b>Video</b>                  | Be able to receive video calls with video codec H.264   | ★ |
| <b>Local Audio Conference</b> | 6-party audio conferencing  | ★ |
| <b>WiFi/Bluetooth</b>         | BT4.2, WiFi 2.4GHz&5GHz   | ★ |
| <b>Audio</b>                  | HD Audio with G.722,Opus<br>Full-duplex Acoustic Echo Canceller (AEC)<br>Noise Reduction technologies |   |
| <b>SIP Lines</b>              | 20  |   |
| <b>DSS Keys</b>               | 45(9×5)   |   |
| <b>Network</b>                | 10/100/1000 Mbps  |   |
| <b>USB</b>                    | USB Type A ×1,connect with USB headset&USB disk   |   |
| <b>Power</b>                  | PoE/PSU   |   |
| <b>Installation</b>           | Desktop Stand/Wall Mountable (optional)   |   |

# V64: Prime Business Phone



|                               |  |
|-------------------------------|--|
| <b>Screen</b>                 | 3.5" 480x320 Color LCD   |
| <b>OS</b>                     | Linux  |
| <b>Local Audio Conference</b> | 6-party audio conferencing <span style="float: right;">★</span>  |
| <b>WiFi/Bluetooth</b>         | BT4.2, WiFi 2.4GHz&5GHz <span style="float: right;">★</span>   |
| <b>Audio</b>                  | HD Audio with G.722, Opus<br>Full-duplex Acoustic Echo Canceller (AEC)<br>Noise Reduction technologies |
| <b>SIP Lines</b>              | 12   |
| <b>DSS Keys</b>               | 21(7×3)  |
| <b>Network</b>                | 10/100/1000 Mbps   |
| <b>USB</b>                    | USB Type A ×1, connect with USB headset&USB disk   |
| <b>Power</b>                  | PoE/PSU  |
| <b>Installation</b>           | Desktop Stand/Wall Mountable (optional)  |





# V62: Essential Business Phone



|                        |  |
|------------------------|--|
| Screen                 | 2.7" 192x64 Graphical LCD  |
| OS                     | Linux  |
| Local Audio Conference | 6-party audio conferencing <span style="color: red;">★</span>  |
| Audio                  | HD Audio with G.722, Opus<br>Full-duplex Acoustic Echo Canceller (AEC)<br>Noise Reduction technologies |
| WiFi                   | WiFi via WF20  |
| Bluetooth              | Bluetooth via BT20   |
| SIP Lines              | 6  |
| DSS Keys               | 15(5×3)  |
| Network                | 10/100/1000 Mbps   |
| USB                    | USB Type A x 1, connect with USB headset&USB disk  |
| Power                  | PoE/PSU  |
| Installation           | Desktop Stand/Wall Mountable (optional)  |



**02**

# Highlights

---



# Fanvil V67 Flagship Smart Video Phone Highlights

Antibacterial Surface Protection

Adjustable Touch Screen

Cool Lighting Keypad

Integrated with Hall Switch

Built-in HD Camera

Camera Lens Cover for Privacy  
Secure

Audio/Video Mixed Conferencing

Android 9.0 OS

Security Linkage

Built-in WiFi and Bluetooth

Zero Touch Deployment

Two Installation Methods



# Antibacterial Surface Protection

Antibacterial material of the handset and keypad surface effectively inhibits more than 99.5% of bacteria growth. We protect your health during the special period.



\* It is available for V67/V65



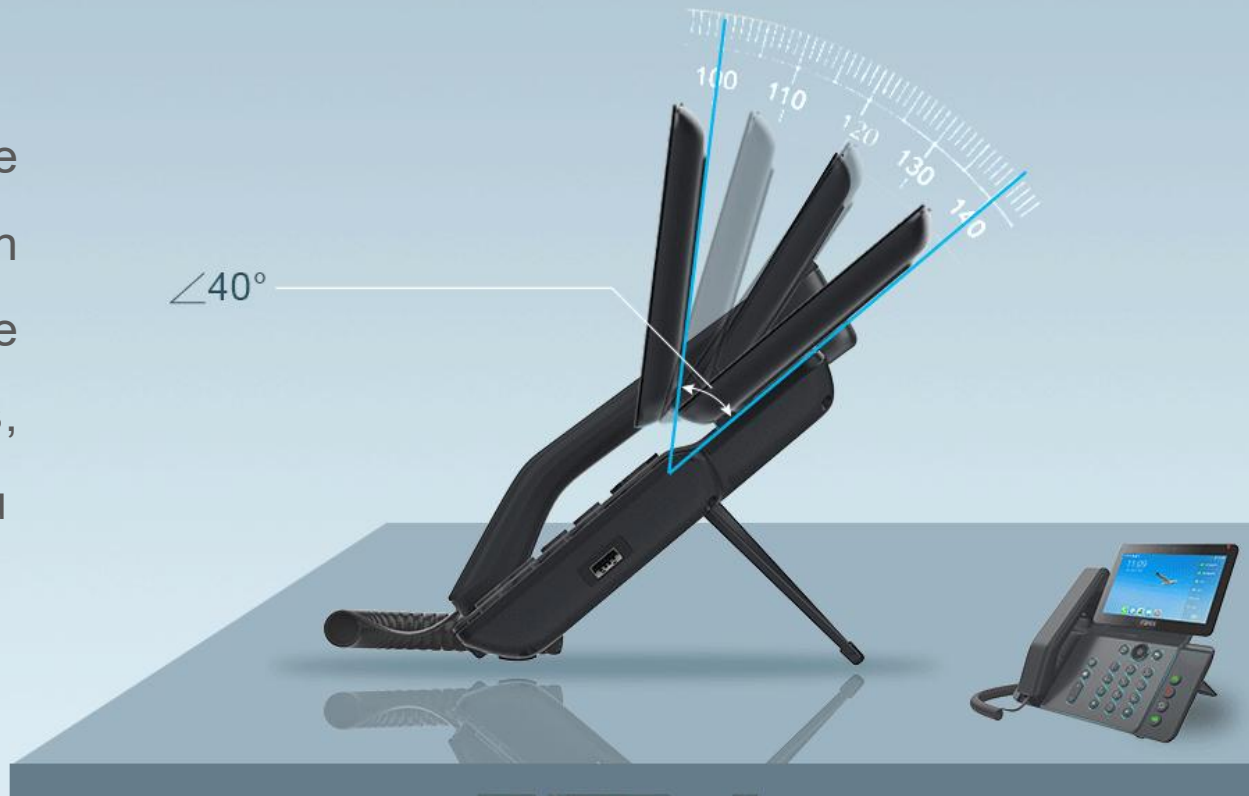


## Adjustable Touch Screen, Enjoy Your View

V series has a brand new elegant design with the sleek edge and a big screen. 7" adjustable touch screen of V67 allows you to adjust the viewing angle from 0-40° under different lighting environments, making it easier to read the messages no matter you are sit or stand at the table.



\* It is available for V67/V65





## Cool Lighting Color, Show Off Your Keypad

The inspiration for cool lighting keypad in V67 comes from the luxury car interior. The lighting not only pleases your eyes but also improves your work efficiency as a status indicator.



# Integrated with Hall Switch, Stable and Durable

- The hall switch can be regarded as an internal sensor to determine whether the handset of IP phone is properly placed
- No popping noise when picking up or hanging up the handset and provide a quiet working environment
- Hall switch without moving parts enables a longer service life than the traditional hook switch

Hall Switch



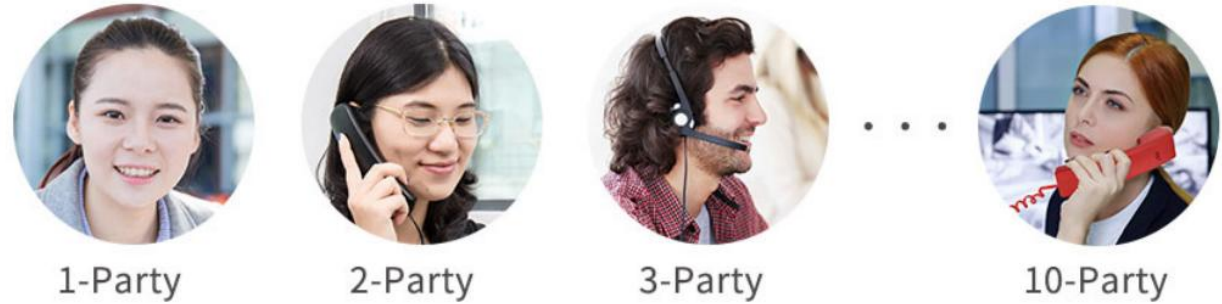


# Audio/Video Mixed Conferencing, Connect More

- V67 supports 10-party audio conferencing (including up to 2-party video calls) and 3-party video conferencing
- The conference management mode enables you to manage the conference efficiently, such as hold, remove, and mute the call of participants



\* V65、V64、V62 support 6-party audio conferencing





# HD Audio and Video, Catch Every Detail

- V series delivers HD audio with Opus, G.722 audio codec, Noise Reduction technologies and Full-duplex AEC
- V67 features a built-in 5 Mega-pixel 1080P camera with a privacy cover, providing you an enjoyable HD video collaboration



## Camera Lens Cover For Your Privacy Secure

- The built-in lens cover is designed to block the camera to well protect the your personal privacy



\* It is available for V67

# Android 9.0 OS, Support More Possibilities

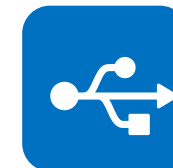
- Based on Android 9.0 operating system, V67 provides a comprehensive SDK (developer kit) to meet the customization needs of industry applications and secondary development





# Built-in WiFi and Bluetooth, More Flexible, Less Limitation

- Built-in WiFi enables more flexible working method and can connect to a bigger screen via Miracast in the small video conference
- V series also feature Bluetooth 4.2 for pairing with headsets and mobile phones to help you to handle multitask
- USB interface can connect USB flash disk and headset



\* Built-in WiFi and Bluetooth are available for V67, V65, V64

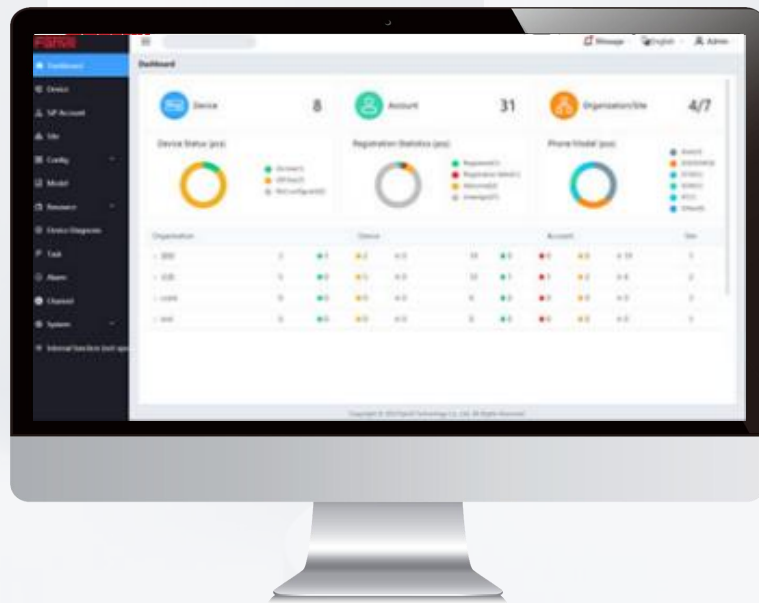


# Available to Link with Security Products

- Compatible with SIP standard and major mainstream platforms, V series can be easily customized into various security solutions for reducing investment



# Zero Touch Deployment



- Fanvil Device Management System (FDMS) enables users to realize plug-and-play and efficient auto-provisioning online, realizing the remote management and upgrade

## Desktop Stand/Wall Mountable, Suitable for Various Scenarios

Two installation methods of desktop stand and wall mountable are suitable for different kinds of application scenarios.



**03**

# Comparison

---





| Model                    | V67  | T58W with camera                             |
|--------------------------|--|--|
| System                   | Android 9.0                                    | Android 9.0                                  |
| Main Screen              | 7-inch (1024*600) IPS Touch Screen             | 7-inch (1024*600) IPS Touch Screen           |
| Video Codec              | H.264  | H.264, H.264HP, VP8                          |
| Colorful Lighting Keypad | √ ★  | ×  |
| Adjustable Screen        | √  | √  |
| Antibacterial Surface    | √ ★  | ×  |
| Video Call               | √  | √  |
| Camera                   | Built-in 5 Mega-pixel Camera, 1080P@30fps ★    | USB CAM 2 Megapixel Camera, Adjustable Angle |
| DSS Keys                 | 116 DSS Keys                                   | 27 DSS Keys                                  |
| SIP Lines                | 20   | 16   |
| Local Phone Book         | 2000   | 1000   |
| Local Audio Conference   | 10 (including up to 2-party video calls)       | 10(including up to 2-party video calls)      |
| Local Video Conference   | 3  | 3  |
| IPv6                     | √  | √  |
| Wideband codecs          | G.722,Opus                                     | G.722,Opus                                   |
| Narrowband codecs        | G.711,G.729A/B, iLBC                           | G.711(A/μ), G.729A/B, G.726, G.723.1, iLBC   |
| USB                      | USB Type A x 1, Connect with USB Headset & USB | USB Type A x 1                               |
| Bluetooth                | Bluetooth 4.2                                  | Bluetooth 4.2                                |
| WiFi                     | 2.4GHz&5GHz WiFi                               | 2.4GHz&5GHz WiFi                             |
| PoE                      | √  | √  |
| Network                  | 10/100/1000 Mbps                               | 10/100/1000 Mbps                             |
| EHS                      | √  | √  |

| Model                  | V64   | T53/T53W                                   | V65  | T54W                                       |
|------------------------|---|--|--|--|
| System                 | Linux   | Linux                                      | Linux  | Linux                                      |
| Main Screen            | 3.5-inch (480*320) Color Screen ★               | 3.7-inch (360x160) Dot-matrix Screen       | 4.3-inch (480*272 ) Color Screen (IPS)         | 4.3-inch (480*272 ) Color Screen           |
| Adjustable Screen      | ×   | √  | √  | √  |
| Antibacterial Surface  | ×   | ×  | √ ★  | ×  |
| DSS Keys               | 21  | 21   | 45   | 27   |
| SIP Lines              | 12  | 12   | 20   | 16   |
| Local Phone Book       | 1000  | 1000                                       | 2000   | 1000                                       |
| Local Audio Conference | 6 ★   | 5  | 6  | 10   |
| IPv6                   | √   | √  | √  | √  |
| Wideband codecs        | G.722,Opus                                      | G.722, Opus                                | G.722,Opus                                     | G.722,Opus                                 |
| Narrowband codecs      | G.711, G.723.1, G.726, G.729A/B, iLBC           | G.711(A/μ), G.729A/B, G.726, G.723.1, iLBC | G.711, G.723.1, G.726, G.729A/B, iLBC          | G.711(A/μ), G.729A/B, G.726, G.723.1, iLBC |
| USB                    | USB Type A x 1 , Connect with USB Headset & USB | USB Type A x 1                             | USB Type A x 1, Connect with USB Headset & USB | USB Type A x 1                             |
| Bluetooth              | Bluetooth 4.2                                   | T53W: Bluetooth 4.2                        | Bluetooth 4.2                                  | Bluetooth 4.2                              |
| WiFi                   | 2.4GHz & 5GHz WiFi                              | T53W: 2.4GHz & 5GHz WiFi                   | 2.4GHz & 5GHz WiFi                             | 2.4GHz & 5GHz WiFi                         |
| PoE                    | √   | √  | √  | √  |
| Network                | 10/100/1000 Mbps                                | 10/100/1000 Mbps                           | 10/100/1000 Mbps                               | 10/100/1000 Mbps                           |
| EHS                    | √   | √  | √  | √  |

| Model                  | V62  | T40G                                      | T41S/T42S   | T42U   |
|------------------------|--|---|---|--|
| System                 | Linux  | Linux                                     | Linux   | Linux  |
| Main Screen            | 2.7-inch (192 x 64)<br>Dot-matric Screen           | 2.3-inch (132 x 64 )<br>Dot-matric Screen | 2.7-inch (192 x 64)<br>Dot-matric Screen                  | 2.7-inch (192x64 )<br>Dot-matric Screen                                  |
| DSS Keys               | 15 ★   | 3   | 15  | 15   |
| SIP Lines              | 6  | 3   | T41S: 6 T42S: 12  | 12   |
| Local Phone Book       | 1000   | 1000                                      | 1000  | 1000   |
| Local Audio Conference | 6 ★  | 3   | 5   | 5  |
| IPv6                   | √  | √   | √   | √  |
| HD Audio               | √  | √   | √   | √  |
| Wideband codecs        | G.722,Opus   | G.722, Opus                               | G.722, Opus   | AMR-WB (Optional), Opus,<br>G.722  |
| Narrowband codecs      | G.711, G.723.1, G.726, G.729A/B, iLBC              | G.711(A/μ), G.729, G729A,<br>G.726, iLBC  | G.711(A/μ),G.729, G729A,<br>G.726,<br>G.723.1, iLBC, Opus | AMR-NB (Optional), Opus,<br>G.711(A/μ), G.723.1, G.729AB,<br>G.726, iLBC |
| USB                    | USB Type A x 1 , Connect with USB<br>headset & USB | ×   | USB Type A x 1, Connect<br>with USB Headset & USB         | Dual USB Ports   |
| Bluetooth              | Bluetooth via BT20                                 | ×   | Bluetooth via BT40  | Bluetooth via BT40/BT41  |
| WiFi                   | WiFi via WF20                                      | ×   | Wi-Fi via WF40  | Wi-Fi via WF40/WF50  |
| PoE                    | √  | √   | √   | √  |
| Network                | 10/100/1000 Mbps                                   | 10/100/1000 Mbps                          | T41S: 10/100M<br>T42S: 10/100/1000 Mbps                   | 10/100/1000 Mbps   |
| EHS                    | √  | √   | √   | √  |

# THANKS

