

vNebula

Cloud. **Made Easy.**

Introducing vNebula from Stream Networks.
A simple, self-service cloud portal for our partner community.

Keep it simple

Our partners asked us for a cloud portal that was simple to set up and easy to use. Like us, they were tired of endless configuration pages and overwhelming options. They wanted a platform that could be used to create, access and manage virtual machines, all from one place.

In response to this, Stream Networks has created

vNebula

Cloud. Made Easy.

Contents

vNebula – at a glance

vNebula catalogue, a selection of hosted PBXs, desktops, databases and developer tools

vNebula interface – Cloud. Made easy.

vNebula machines – meet the family

vNebula – your questions answered

vNebula – at a glance

Easy to use

- Simple one-click server provision
- Choice of ready-to-use server templates and applications
- Remote console access and server configuration
- Simple monthly pricing plan
- White-label portal
- Scalable, modular architecture: only pay for what you need today

High availability infrastructure

- Servers and data held in three secure, purpose-built UK data centres, providing 100% up time
- Underlying VMware HA hypervisor
- Replicated secure SAN storage
- Connected to Stream Networks core 10GB network
- N+1 server backup powered by Veeam

vNebula catalogue

The vNebula catalogue covers infrastructure, platform and software services, offering scalable choices for beginners through to power users. Using Bitnami's app stack, hosted PBX technology and MSWindows' SPLA licensing, vNebula users can deploy over 150 market-leading IaaS, PaaS and SaaS solutions.

Run servers. Run desktops.
Run PBXs.



Deploy your favourite Microsoft packages.



Run over 40 developer tools,
databases and CMSs.



Over 100 preconfigured programs
ready to go.



vNebula interface – Cloud. Made easy.

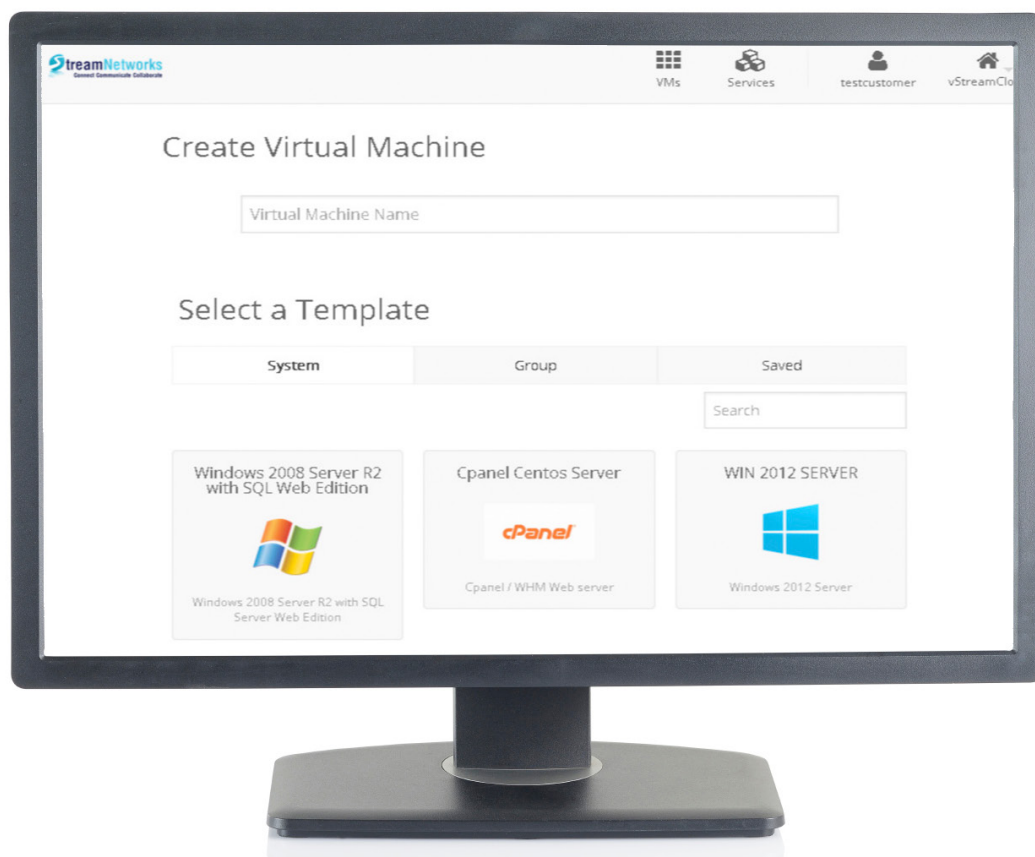
At the heart of vNebula is a simple, straightforward user interface where you can create, add or configure virtual machines and add new machine templates.

Cloud your way

From here you can provide your customers with instant cloud services and VMs, either from a selection of 150+ templates or a custom program of your own. The interface can be branded just for your business and your administrators are the only ones with access to your portal.

Cloud simple yet secure

The virtual machines you create using vNebula are based in our n+1 servers, co-located at secure sites throughout the UK. Each cluster is designed to provide 100% uptime and comprise the latest in replicated storage arrays, network capacity and processing power, all built using VMware's HA hypervisor.



vNebula – meet the family

vNebula runs six different types of virtual machine. Each is tuned to the processing requirements of the operating system, developer tools and preconfigured programs you choose to offer to your customer.

1

vNebula Machine 1

VCPU: 1

RAM: 512MB

Starter Disk: 20GB

Suitable for: Small dedicated processes which don't demand a lot of memory
e.g. Roundcube

2

vNebula Machine 2

VCPU: 1

RAM: 1GB

Starter Disk: 40GB

Suitable for: Slightly more demanding dedicated processes e.g. Moodle, OwnCloud, PfSense Firewall

3

vNebula Machine 3

VCPU: 1

RAM: 2GB

Starter Disk: 60GB

Suitable for: Mid-level processes which require extra memory e.g. Virtual PBXs, Microsoft Exchange, Office 365, Concrete 5

4

vNebula Machine 4

VCPU: 2

RAM: 2GB

Starter Disk: 80GB

Suitable for: Mid-level processes running in parallel which require extra memory
e.g. Ubuntu, Centos OS, Suse, Debian

5

vNebula Machine 5

VCPU: 4

RAM: 4GB

Starter Disk: 100GB

Suitable for: Memory-hungry processes running in parallel and dedicated servers e.g. Windows Server 2012, Gitlab, Lemp Stack

6

vNebula Machine 6

VCPU: 4

RAM: 8GB

Starter Disk: 200GB

Suitable for: Extremely memory-hungry processes running in parallel and dedicated servers e.g. TomCat Stack, Microsoft SQL Server

vNebula – your questions answered

Q Are my virtual machines backed up and how often?

A All data for machines 4, 5 and 6 is backed up nightly and stored for 7 days before refreshing. The vNebula backup system creates two copies of your machine; these backups are stored in two separate data centres for added redundancy.

Q How do I pay for my usage and how will I be billed?

A All vNebula machines have a fixed monthly cost. Pricing is not linked to time units or amount of computing power used over a period of time. Machine creation on the portal is linked into our billing system. When you deploy a machine we add it to your monthly bill.

Q Can I rebrand vNebula?

A Yes. Just tell us what you'd like and our web team will add your company branding to the portal.

Q Are vNebula machines covered by a Service Level Agreement (SLA)?

A Yes, all vNebula machines are covered by the Stream Networks Cloud Computing SLA. Ask us for details.

Q Can I upload my own programs/applications to the portal?

A Yes, our tech team can create a template of your program or application and add it to your vNebula portal.

Q What kind of technical support will I receive?

A Stream Networks Technical Support is available 24/7 to deal with any issues you may have.

Q Can my customers upgrade their vNebula machines?

A Yes, all of the machines can be customised to meet user requirements. Just ask, and we can add vCPUs, RAM and disk space.

If you would like more information on how vNebula could add value to your customers and boost your business offering please get in touch with our vNebula cloud team.

vNebula@stream-networks.co.uk | 01635 884 170



2, Riverside House,
Mill Lane, Newbury,
West Berkshire RG14 5QS

T 01635 884 170
E vNebula@stream-networks.co.uk
W www.stream-networks.co.uk